

## GÎTE NAVARRE IN DORRES - FRANCE



The **GITE NAVARRE** is located in the old and quiet village of Dorres which looks over the mountains. It is an old typical mountain farm. It was made of granite stones in the 17th century. The gite has a surface of 99 m<sup>2</sup> shared on two levels. It can accommodate up to 6 persons in 3 rooms.



The village of Dorres is in the middle of the mountains, at an altitude of 1450 meters. The old medieval houses keep its charming character to the village. The Mediterranean sea is not far. The sea has a remarkable influence on the weather, normally not expectable in the mountains.

**GITE NAVARRE** in Dorres is officially rated 2 stars (official government source).



**The roman thermal spa** : a footpath of ¼ mile leads to the sulfurous mineral water baths at 39 °C. This water is well known to relieve rheumatism and to make the skin softer. It procures relaxation in a peaceful surrounding after a walk or a physical activity, in summer as well as in winter. It is advisable to stay 20 to 30 minutes in the sulfurous mineral water. This duration is not limited and is left at everybody's free will.



Starting from the front door of your house, walking and trekking in the mountain or in the forest are available in all seasons. Leave the car at home, go and enjoy the landscape. Five major ski resorts are not far from 20 km. **The shops** of the city of Puigcerdà (Spain) are at 7 km. **Andorra** is at 35 km for tax-free shopping.





No smoker house.

## Gîte Navarre à Dorres



Living room and kitchen are on the ground floor, both opening onto the courtyard. The 3 bedrooms (6 persons) and TV room, are on the first floor, as well as the shower and the toilet. We recommend socks or slippers to avoid marking the wooden floors. Every year, a phase of renovation concerns one or two rooms of the house.



**Bedroom A** : with two single beds 90/190.

**Bedroom B** : 1 90/100 bed and 1 80/180 bed that slides under the first one.

**Bedroom C** : with a large bed 140/190.

**TV room**

**Shower room**, 1 separate toilet.

**Living room** with wood stove (firewood logs are provided) and dining room communicating with the courtyard.

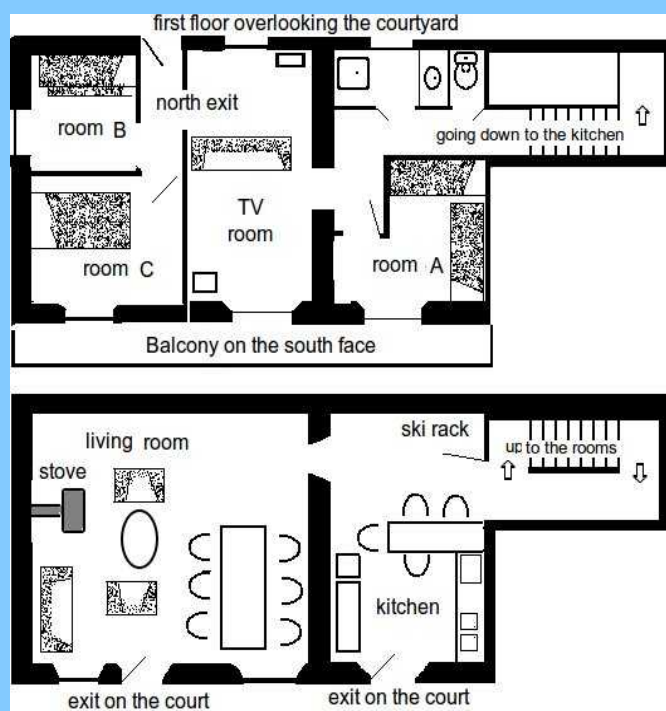
**Open plan kitchen** up to 5 stools.

**Courtyard** enclosed by a stonewall and closed by a gate, facing south.

**Screening** of the windows of the rooms by shutters.

**Gas heating** completed by electric radiators in the bedrooms and in the bathroom. Electric boiler for warm water.

The **parking** for 2 cars is in front of the north entrance. It is also possible to park the cars in the courtyard.



GÎTE NAVARRE – 1 Cami dels Banys – 66760 DORRES -  
Phone : 04 68 04 95 92 – 06 99 49 15 20 – [info.fr@gite-navarre.com](mailto:info.fr@gite-navarre.com)

Get more information on <http://www.gite-navarre.com>